



Land at 103a Gathurst Lane, Shevington, Wigan, WN6 8HS  
Offers In The Region Of £230,000

PLOT OF LAND MEASURING  
APPROX 0.24 ACRES WITH OUTLINE  
PLANNING FOR 2 X DWELLINGS

# Land at 103a Gathurst Lane, Shevington, Wigan, WN6 8HS

Situated on one of the most desirable areas in the village of Shevington, Wigan.

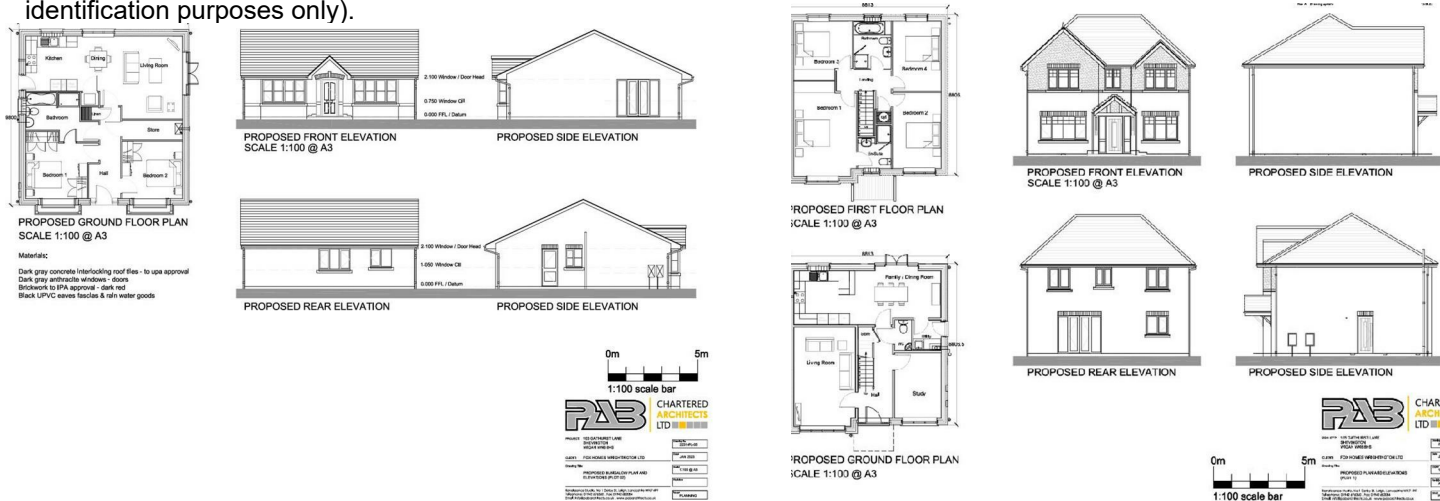
A plot of land comprising approximately 0.10 ha (0.24 ac) which has the benefit of Outline Planning Consent for 2 x detached residential properties.

The consent allows for a two bedroom detached bungalow and a detached four bedroom home with a detached garage.

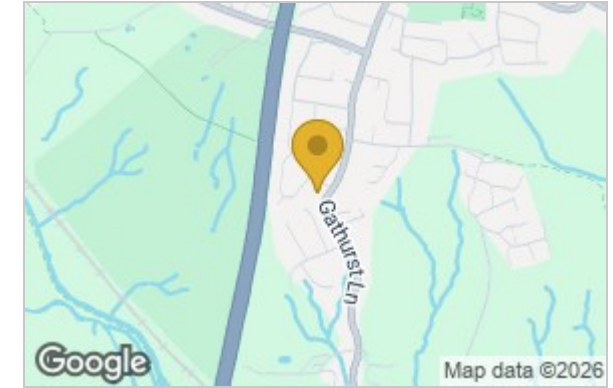
The village of Shevington which is in walking distance has an array of amenities, there are also excellent links to Junction 27 of the M6 Motorway.

Full Planning Details can be found on [www.wigan.gov.uk](http://www.wigan.gov.uk) under application reference number A/23/95730/OUT.

(Where aerial photographs are used with indicative boundaries no liability for accuracy is offered these are approximate for identification purposes only).



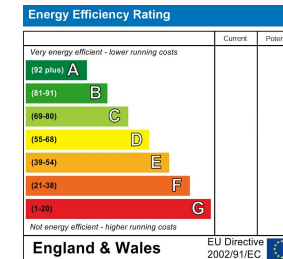
## Area Map



## Floor Plan



## Energy Efficiency Graph



These particulars, whilst believed to be accurate are set out as a general outline only for guidance and do not constitute any part of an offer or contract. Intending purchasers should not rely on them as statements of representation of fact, but must satisfy themselves by inspection or otherwise as to their accuracy. No person in this firm's employment has the authority to make or give any representation or warranty in respect of the property.

The Old Bridge Club 38 Bridgeman Terrace, Wigan, Greater Manchester, WN1 1TT  
 Tel: 01942 242 636 Email: [Info@fazakerleysharpe.co.uk](mailto:Info@fazakerleysharpe.co.uk) [www.fazakerleysharpe.co.uk](http://www.fazakerleysharpe.co.uk)